



Daiwa House[®]
Group

Financial Factbook

First Half of Fiscal Year Ending March 31, 2010

April 1 to September 30, 2009



Daiwa House Industry Co., Ltd.

Daiwa House Industry Financial Factbook

1st Half of Fiscal Year Ending March 31, 2010

Contents

目次

Housing Starts / Sales of Houses 住宅着工戸数 / 住宅販売戸数	1
---	---

Consolidated 連結

Financial Statements

財務諸表

Consolidated Balance Sheets 連結貸借対照表	2-4
--	-----

Analysis of Financial Position

財政状態

Net Asset Ratio / Other Ratios 自己資本比率 / その他の比率	5
Return on Equity / Per Share Data 自己資本当期純利益率 / 一株当たり指標	

Capital Investments

設備投資

Capital Investments / Depreciation 設備投資額 / 減価償却費	6
---	---

Analysis of Operations

業績

Consolidated Statements of Income 連結損益計算書	7
Sales by Segment セグメント別売上高	8-9
Operating Income (Loss) by Segment セグメント別営業利益(損失)	

Reference Materials

参考資料

Residential Business 住宅事業	10
Commercial Construction Business 商業建築事業	11
Resort Hotels and Sports Life Business リゾート・スポーツ施設事業	12
Other Businesses - City-Center Hotels その他事業 - 都市型ホテル部門	
Home Center Business ホームセンター事業	
Performance Indicators of Major Companies in the Daiwa House Group 大和ハウスグループ主要各社の経営指標	13

Non-Consolidated 個別

Financial Statements

財務諸表

Non-Consolidated Balance Sheets 貸借対照表	14-16
Non-Consolidated Statements of Income 損益計算書	17

Analysis of Operations

業績

Sales by Segment 事業別売上高	18
Gross Profit Ratio by Segment 事業別売上総利益率	
Orders Received by Segment / Sales by Segment 事業別受注高 / 売上高の状況	19

Reference Materials

参考資料

Residential Business 住宅事業	20
Condominiums Business マンション事業	21

* Remarks on appropriate use of forecasted results of operation and other special matters

Consolidated and non-consolidated business forecasts are based on assumptions in light of the information available as of the date (November 10, 2009) of announcement of this material and the factors of uncertainty that may possibly impact the future results of operation. The Company's actual results may differ significantly from those presented herein as a consequence of numerous factors such as economic conditions, competitor situations and fluctuations in land prices.

業績予想の適切な利用に関する説明、その他特記事項

連結及び個別の業績予想は、本資料の発表日現在(2009年11月10日)において入手可能な情報及び将来の業績に影響を与える不確実な要因に係る仮定を前提としています。今後実際の業績は、経済の状況、競合の状況や地価の変動の他、様々な要因によって大きく異なる結果となる可能性があります。



Housing Starts / Sales of Houses

住宅着工戸数 / 住宅販売戸数

Housing Starts

住宅着工戸数

(Thousands of units / 千戸)

	'05/03	'06/03	'07/03	'08/03	'09/03	'09/03-1H	'10/03-1H
Housing starts 住宅着工戸数	1,193	1,249	1,285	1,036	1,039	581	384
Private-owned houses 持家	367	353	356	312	311	176	148
Subdivisions 分譲 (一戸建)	139	138	138	121	107	59	45
Condominiums for sale 分譲 (マンション)	207	231	242	160	165	98	31
Rental houses 貸家【集合住宅】	467	518	538	431	445	241	152
Prefabricated housing starts プレハブ着工戸数	160	157	160	147	148	79	62
Prefabricated housing share (%) プレハブシェア (%)	13.4	12.5	12.4	14.2	14.3	13.6	16.0
Private-owned houses 持家	66	64	64	57	55	31	26
Prefabricated housing share (%) プレハブシェア (%)	18.0	18.0	17.9	18.2	17.8	17.7	17.6
Subdivisions 分譲 (一戸建)	8	7	8	9	6	4	2
Prefabricated housing share (%) プレハブシェア (%)	2.2	2.0	2.1	3.1	2.3	2.3	2.6
Rental houses 貸家【集合住宅】	86	85	87	81	86	44	33
Prefabricated housing share (%) プレハブシェア (%)	18.4	16.4	16.2	18.7	19.3	18.2	21.7

Source: Statistics for housing (including prefabricated) starts are from Housing Starts Survey by Ministry of Land, Infrastructure and Transport.

(注)住宅着工戸数及びプレハブ着工戸数は、「住宅着工統計」(国土交通省)より

Sales of Houses

住宅販売戸数

(Units / 戸)

	'05/03	'06/03	'07/03	'08/03	'09/03	'09/03-1H	'10/03-1H	Forecasts '10/03予想
Sales of houses 住宅販売戸数	42,855	43,632	44,983	44,029	43,239	21,771	19,923	38,750
Single-family houses, contracting 戸建	10,410	9,641	9,309	9,070	8,586	4,545	4,420	8,590
Subdivisions 分譲	2,060	1,944	1,955	1,685	1,729	920	657	1,260
Condominiums for sale マンション	3,727	4,391	4,981	4,253	3,511	1,742	1,557	2,600
Rental houses 集合	26,658	27,656	28,738	29,021	29,413	14,564	13,289	26,300


Financial Statements
財務諸表
Consolidated Balance Sheets
連結貸借対照表

(¥ Million / 百万円)

	'05/03	'06/03	'07/03	'08/03	'09/03	'10/03-1H
Assets						
資産の部						
Current assets						
流動資産						
Cash and deposits						
現金預金	150,739	124,021	102,369	100,354	105,840	79,592
Notes receivable, accounts receivable from completed construction contracts and other						
受取手形・売掛金	70,304	60,631	60,238	63,337	51,445	63,160
Marketable securities						
有価証券	24	-	-	20	-	206
Inventories						
たな卸資産	324,238	368,334	432,328	495,612	396,443	325,088
Costs on uncompleted construction contracts						
未成工事支出金	35,248	49,560	59,259	72,602	57,444	31,646
Land for sale						
販売用土地	219,944	247,569	284,610	308,055	237,621	208,161
Buildings for sale						
販売用建物	45,574	48,464	63,375	87,686	76,574	65,839
Other						
その他の流動資産	69,096	69,192	72,672	103,450	108,800	114,678
Allowance for doubtful accounts						
貸倒引当金	-1,861	-2,161	-1,274	-897	-1,342	-1,175
Total current assets	612,542	620,019	666,334	761,877	661,187	581,551
Noncurrent assets						
固定資産						
Property, plant and equipment						
有形固定資産	441,387	505,471	602,260	642,816	728,953	770,379
Buildings and structures						
建物及び構築物	154,714	180,550	204,361	237,455	315,673	331,444
Land						
土地	243,698	286,699	344,107	341,407	356,002	375,439
Other						
その他	42,973	38,220	53,790	63,952	57,277	63,494
Intangible assets						
無形固定資産	8,880	11,791	17,116	12,410	13,176	20,251
Investments and other assets						
投資その他の資産	295,995	337,915	344,311	373,948	407,255	423,104
Total noncurrent assets	746,264	855,178	963,688	1,029,175	1,149,385	1,213,736
Total assets	1,358,806	1,475,197	1,630,022	1,791,052	1,810,573	1,795,287
資産合計						


Financial Statements
財務諸表
Consolidated Balance Sheets
連結貸借対照表

(¥ Million / 百万円)

	'05/03	'06/03	'07/03	'08/03	'09/03	'10/03-1H
Liabilities						
負債の部						
Current liabilities						
流動負債						
Notes payable, accounts payable for construction contracts and other 支払手形・工事未払金等	156,973	169,853	253,255	189,860	129,843	110,905
Short-term loans payable 短期借入金	13,175	6,183	6,933	11,918	16,407	14,369
Current portion of long-term loans payable 一年以内返済予定の長期借入金	1,367	2,927	1,070	1,595	5,610	5,892
Commercial papers コマーシャル・ペーパー	-	-	-	20,000	-	-
Income taxes payable 未払法人税・事業税	15,699	16,211	15,832	23,163	6,962	17,428
Advances received on uncompleted construction contracts 未成工事受入金	48,005	65,423	62,870	58,628	61,054	37,907
Other その他の流動負債	150,035	166,769	149,626	179,158	152,757	146,139
Total current liabilities	385,256	427,368	489,588	484,323	372,636	332,641
Noncurrent liabilities						
固定負債						
Bonds payable 社債	-	-	-	-	-	4,500
Long-term loans payable 長期借入金	6,555	13,527	50,570	193,376	319,956	329,781
Other その他の固定負債	371,087	383,109	428,718	463,911	510,553	506,023
Total noncurrent liabilities	377,642	396,637	479,288	657,287	830,509	840,304
Total liabilities	762,898	824,006	968,876	1,141,611	1,203,145	1,172,946
負債合計						
Interest-bearing liabilities						
有利子負債	21,097	22,638	58,573	228,390	344,534	358,200
Debt / Equity ratio (%)						
D/Eレシオ (%)	4.0	3.9	8.9	36.1	56.8	57.6
Net Debt / Equity ratio (%)						
ネットD/Eレシオ (%)	-	-	-	20.2	39.3	44.8



Financial Statements
財務諸表

Consolidated Balance Sheets

連結貸借対照表

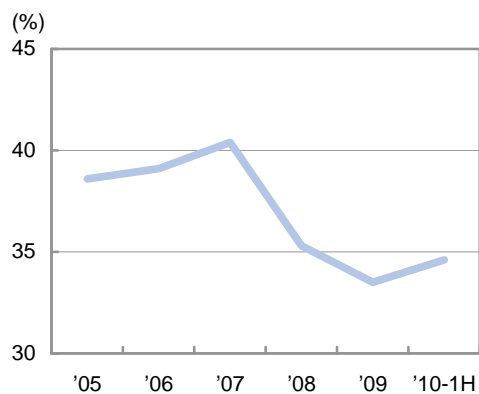
(¥ Million / 百万円)

	'05/03	'06/03	'07/03	'08/03	'09/03	'10/03-1H
Minority interests 少数株主持分	71,798	74,656	-	-	-	-
Shareholders' equity 資本の部						
Capital stock 資本金	110,120	110,120	-	-	-	-
Capital surplus 資本剰余金	147,759	148,019	-	-	-	-
Retained earnings 利益剰余金	325,893	355,494	-	-	-	-
Treasury stock 自己株式	-4,168	-3,571	-	-	-	-
Revaluation reserve for land 土地再評価差額金	-69,229	-63,392	-	-	-	-
Valuation difference on available-for-sale securities その他有価証券評価差額金	14,662	30,746	-	-	-	-
Foreign currency translation adjustment 為替換算調整勘定	-927	-882	-	-	-	-
Total shareholders' equity 資本合計	524,109	576,534	-	-	-	-
Total liabilities, minority interests and shareholders' equity 負債、少数株主持分及び資本合計	1,358,806	1,475,197	-	-	-	-
Net assets 純資産の部						
Shareholders' equity 株主資本						
Capital stock 資本金	-	-	110,120	110,120	110,120	110,120
Capital surplus 資本剰余金	-	-	226,834	226,824	226,824	226,824
Retained earnings 利益剰余金	-	-	387,842	381,479	370,240	377,426
Treasury stock 自己株式	-	-	-7,692	-19,534	-19,553	-19,581
Total shareholders' equity 株主資本合計	-	-	717,104	698,891	687,632	694,790
Valuation and translation adjustments 評価・換算差額等						
Valuation difference on available-for-sale securities その他有価証券評価差額金	-	-	29,873	13,432	2,034	7,864
Revaluation reserve for land 土地再評価差額金	-	-	-86,847	-79,195	-77,878	-77,608
Foreign currency translation adjustment 為替換算調整勘定	-	-	-821	-556	-5,105	-3,667
Total valuation and translation adjustments 評価・換算差額等合計	-	-	-57,795	-66,320	-80,949	-73,411
Minority interests 少数株主持分	-	-	1,837	16,869	744	962
Total net assets 純資産合計	-	-	661,145	649,440	607,427	622,341
Total liabilities and net assets 負債純資産合計	-	-	1,630,022	1,791,052	1,810,573	1,795,287

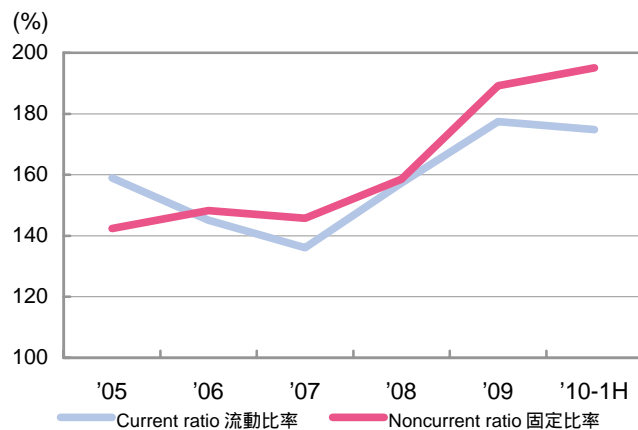


Analysis of Financial Position 財政状態

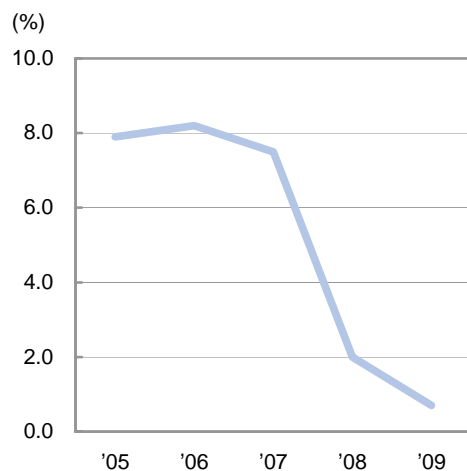
Net Asset Ratio
自己資本比率



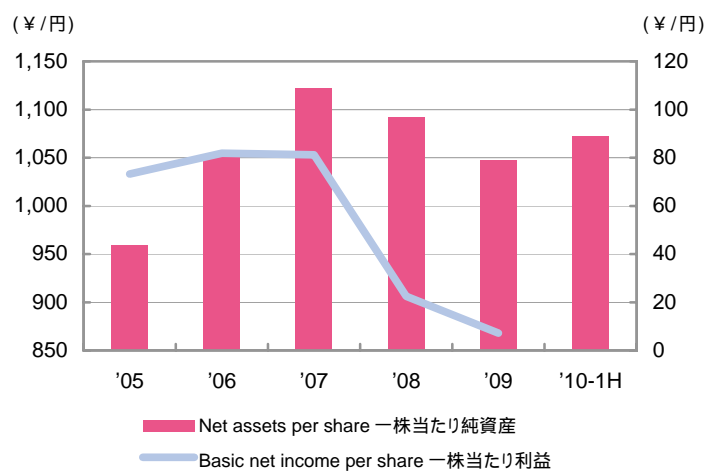
Current Ratio / Noncurrent Ratio
流動比率 / 固定比率



Return on Equity
自己資本当期純利益率



Net Assets per Share (left scale)
一株当たり純資産 (左目盛)
Basic Net Income per Share (right scale)
一株当たり利益 (右目盛)



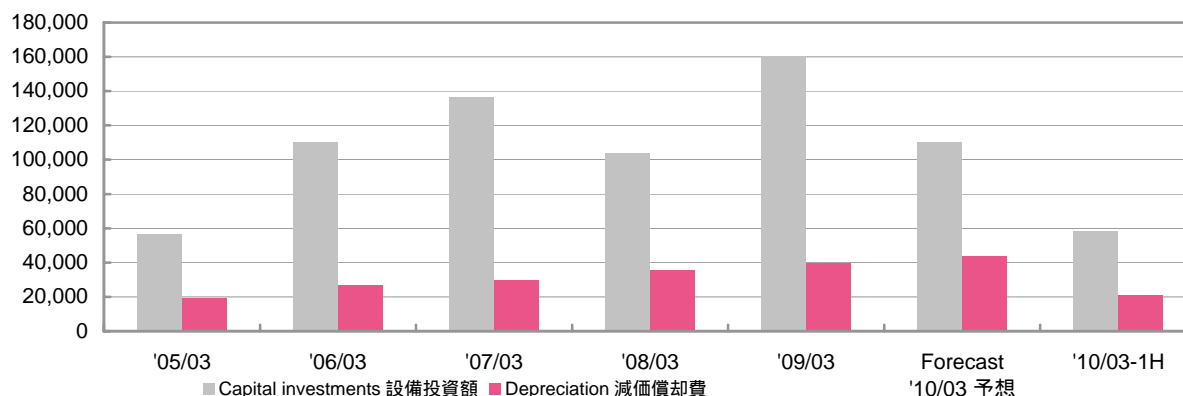
	'05/03	'06/03	'07/03	'08/03	'09/03	'10/03-1H
Net asset ratio 自己資本比率 (%)	38.6	39.1	40.4	35.3	33.5	34.6
Current ratio 流動比率	159.0	145.1	136.1	157.3	177.4	174.8
Noncurrent ratio 固定比率	142.4	148.3	145.8	158.5	189.2	195.0
Return on equity 自己資本当期純利益率 (%)	7.9	8.2	7.5	2.0	0.7	-
Net assets per share (¥) 一株当たり純資産 (円)	959.08	1,053.37	1,122.88	1,092.04	1,047.50	1,072.94
Basic net income per share (¥) 一株当たり利益 (円)	73.26	81.88	81.15	22.46	7.20	-



Capital Investments 設備投資

Capital Investments / Depreciation 設備投資額 / 減価償却費

(¥ Million / 百万円)



Capital Investments 設備投資額

(¥ Million / 百万円)

	'05/03	'06/03	'07/03	'08/03	'09/03	Forecasts '10/03予想	'09/03-1H	'10/03-1H
Capital investments 設備投資額	56,695	110,143	136,171	103,856	160,600	110,000	90,030	58,464
Residential business 住宅事業	7,699	12,642	12,599	10,484	50,112	40,000	24,413	21,165
Commercial construction business 商業建築事業	31,908	77,100	98,812	71,060	89,259	48,900	55,218	29,172
Resort hotels and sports life business リゾート・スポーツ施設事業	850	3,072	2,677	2,794	2,378	4,600	1,391	1,231
Home center business ホームセンター事業	725	611	3,119	733	1,074	500	204	320
Other businesses その他事業	15,842	17,410	19,907	18,719	19,424	16,900	9,949	6,903
Eliminations/Corporate 消去又は全社	(331)	(694)	(945)	63	(1,648)	(900)	(1,146)	(329)

Depreciation 減価償却費

(¥ Million / 百万円)

	'05/03	'06/03	'07/03	'08/03	'09/03	Forecasts '10/03予想	'09/03-1H	'10/03-1H
Depreciation 減価償却費	19,242	26,814	29,536	35,621	39,318	43,800	18,241	21,085
Residential business 住宅事業	4,486	5,227	5,515	6,956	7,248	10,000	3,440	4,661
Commercial construction business 商業建築事業	4,622	7,897	8,971	10,923	13,979	16,700	5,969	7,926
Resort hotels and sports life business リゾート・スポーツ施設事業	1,869	1,918	1,915	2,579	2,859	2,600	1,373	1,217
Home center business ホームセンター事業	704	665	736	875	980	1,000	436	489
Other businesses その他事業	5,875	9,635	11,096	13,085	13,190	12,700	6,545	6,393
Eliminations/Corporate 消去又は全社	1,684	1,470	1,299	1,200	1,059	800	476	397



Analysis of Operations 業績

Consolidated Statements of Income

連結損益計算書

(¥ Million / 百万円)

	'05/03	'06/03	'07/03	'08/03	'09/03	Forecasts '10/03予想	'09/03-1H	'10/03-1H
Net sales 売上高	1,365,913	1,528,983	1,618,450	1,709,254	1,690,956	1,570,000	821,690	804,460
Cost of sales 売上原価	1,082,132	1,213,644	1,283,587	1,360,348	1,357,820	1,263,500	654,189	645,265
Selling, general and administrative expenses 販売費及び一般管理費	215,932	235,266	249,183	259,784	259,555	244,500	132,393	120,446
Operating income 営業利益	67,849	80,072	85,678	89,120	73,580	62,000	35,107	38,748
Interest income and dividends income 受取利息・配当金	1,067	1,590	2,142	2,602	2,840	-	1,549	1,331
Equity in earnings of affiliates 持分法による投資利益	1,610	350	289	315	542	-	482	741
Total non-operating income 営業外収益計	11,860	29,063	10,609	10,176	12,663	11,100	5,250	6,113
Interest expenses 支払利息	736	1,321	1,750	3,371	5,160	-	2,312	2,972
Total non-operating expenses 営業外費用計	5,500	6,062	6,931	38,006	46,388	16,600	5,094	6,146
Ordinary income 経常利益	74,209	103,073	89,356	61,290	39,855	56,500	35,263	38,715
Extraordinary income 特別利益	2,130	2,422	1,911	1,708	1,046	300	533	235
Extraordinary loss 特別損失	13,231	23,340	14,818	38,135	27,181	12,300	3,316	856
Income before income taxes and minority interests 税金等調整前当期純利益	63,108	82,155	76,449	24,862	13,720	44,500	32,480	38,094
Income taxes 法人税等	20,356	33,645	29,982	12,068	10,029	20,500	14,974	16,732
Minority interests in income(loss) 少数株主利益又は損失	2,489	3,325	73	-285	-479	-	-406	2
Net income 当期純利益	40,262	45,184	46,393	13,079	4,170	24,000	17,912	21,359
Basic net income per share (¥) 一株当たり利益(円)	73.26	81.88	81.15	22.46	7.20	41.44	30.92	36.88
Dividend per share (¥) 一株当たり配当金(円)	17.00	20.00	20.00	24.00	24.00	17.00	-	-
Dividend payout ratio (%) 配当性向(%)	23.2	24.4	24.6	106.8	333.4	41.0	-	-
Balance between financial income and expenses 金融収支	331	269	392	-769	-2,320	-	-763	-1,640
Number of issued and outstanding shares (Thousands of share) 発行済株式数(千株)	546,222	546,915	587,158	579,256	579,171	-	579,209	579,137



Analysis of Operations 業績

Sales by Segment セグメント別売上高

	'05/03	'06/03	'07/03	'08/03	'09/03	Forecasts '10/03予想	'09/03-1H	'10/03-1H
Residential business 住宅事業	854,574	909,587	965,898	1,004,365	959,026	925,000	486,096	471,761
Commercial construction business 商業建築事業	363,830	445,251	477,692	512,734	545,141	459,800	241,632	240,098
Resort hotels and sports life business リゾート・スポーツ施設事業	55,748	66,482	67,762	63,701	60,107	56,500	31,160	28,872
Home center business ホームセンター事業	59,164	63,273	62,241	62,623	63,505	61,000	33,267	31,609
Other businesses その他事業	104,129	121,982	124,646	143,346	143,978	137,000	72,549	66,610
Eliminations/Corporate 消去又は全社	(71,533)	(77,594)	(79,790)	(77,517)	(80,802)	(69,300)	(43,016)	(34,491)
Total 合計	1,365,913	1,528,983	1,618,450	1,709,254	1,690,956	1,570,000	821,690	804,460

Operating Income (Loss) by Segment セグメント別営業利益(損失)

	'05/03	'06/03	'07/03	'08/03	'09/03	Forecasts '10/03予想	'09/03-1H	'10/03-1H
Residential business 住宅事業	50,046	50,965	53,166	53,738	28,533	34,500	21,865	20,302
Commercial construction business 商業建築事業	27,420	39,517	46,933	50,507	66,181	48,000	24,128	28,571
Resort hotels and sports life business リゾート・スポーツ施設事業	1,507	635	1,013	40	-1,115	0	-408	-101
Home center business ホームセンター事業	100	1,106	1,771	1,807	1,153	1,200	665	894
Other businesses その他事業	3,534	4,558	4,373	4,560	2,504	1,000	1,089	31
Eliminations/Corporate 消去又は全社	(14,760)	(16,711)	(21,579)	(21,533)	(23,677)	(22,700)	(12,232)	(10,950)
Total 合計	67,849	80,072	85,678	89,120	73,580	62,000	35,107	38,748



Analysis of Operations 業績

Sales by Segment (Corresponding eight business segments under our medium term management plan)

8 事業領域別売上高 (中期経営計画事業領域)

(¥ 1,000 Million / 億円)

Segmentation employed
in financial statements
決算セグメント

	'09/03	'10/03 Previously announced forecasts 期初予想	'10/03 Revised forecasts 今回予想	'09/03-1H	'10/03-1H
Residential business 住宅事業	3,561	3,180	3,220	1,892	1,726
Single-family houses 戸建住宅					
Rental houses 賃貸住宅	4,496	4,533	4,470	2,233	2,238
Commercial construction business 商業建築事業	1,187	975	1,140	573	543
Condominiums マンション					
Existing home business 住宅ストック	348	410	420	169	207
Resort hotels and sports life business リゾート・スポーツ施設事業	3,039	2,840	2,820	1,456	1,409
Commercial facilities 商業施設					
Home center business ホームセンター事業	2,435	1,680	1,793	966	998
Business and corporate facilities 事業施設					
Other businesses その他事業	612	625	575	317	293
Health & Leisure 健康余暇					
Others その他	2,223	2,250	2,130	1,103	1,040
Eliminations/Corporate 消去又は全社	(992)	(843)	(868)	(493)	(414)
Total 合計	16,909	15,650	15,700	8,216	8,044

Operating Income (Loss) by Segment

8 事業領域別営業利益 (損失)

(¥ 1,000 Million / 億円)

	'09/03	'10/03 Previously announced forecasts 期初予想	'10/03 Revised forecasts 今回予想	'09/03-1H	'10/03-1H
Single-family houses 戸建住宅	30	3	60	47	43
Rental houses 賃貸住宅	341	320	358	166	200
Condominiums マンション	-101	-105	-95	0	-52
Existing home business 住宅ストック	7	3	12	3	5
Commercial facilities 商業施設	339	310	310	145	171
Business and corporate facilities 事業施設	333	90	180	96	118
Health & Leisure 健康余暇	-10	0	0	-4	-1
Others その他	49	46	26	26	13
Eliminations/Corporate 消去又は全社	(252)	(217)	(231)	(128)	(112)
Total 合計	735	450	620	351	387



Reference Materials

参考資料

Residential Business

住宅事業

Management of rental housing units

管理戸数の推移

(Units / 戸数)

		'05/03	'06/03	'07/03	'08/03	'09/03	'09/09
Daiwa Living Co., Ltd. 大和リビング	Management of rental housing units 賃貸住宅管理戸数	106,650	131,583	159,288	187,460	213,423	231,524
	Lump-sum contracts (occupancy guarantee) 一括借上(入居保証)戸数	79,930	101,371	126,647	152,012	176,116	193,009
	Occupancy rates(%) 入居率(%)	96.7	97.1	96.3	96.6	96.1	94.4
Daiwa Lease Co., Ltd. 大和リース	Management of rental housing units 賃貸住宅管理戸数	2,036	2,872	3,851	4,565	5,291	-
	Lump-sum contracts (occupancy guarantee) 一括借上(入居保証)戸数	1,902	2,738	3,717	4,425	5,183	-
	Occupancy rates(%) 入居率(%)	92.9	92.0	93.4	95.3	90.3	-
Nihon Jyutaku Ryutu Co., Ltd. 日本住宅流通	Management of rental housing units 賃貸住宅管理戸数	7,250	8,543	9,757	10,783	12,076	12,561
	Lump-sum contracts (occupancy guarantee) 一括借上(入居保証)戸数	6,363	6,927	8,029	8,991	9,959	10,174
	Occupancy rates(%) 入居率(%)	98.2	95.0	93.8	94.3	94.0	94.5
Total 3社計	Management of rental housing units 賃貸住宅管理戸数	115,936	142,998	172,896	202,808	230,790	244,085
	Lump-sum contracts (occupancy guarantee) 一括借上(入居保証)戸数	88,195	111,036	138,393	165,428	191,258	203,183
	Occupancy rates(%) 入居率(%)	96.7	96.8	96.1	96.5	95.8	94.5

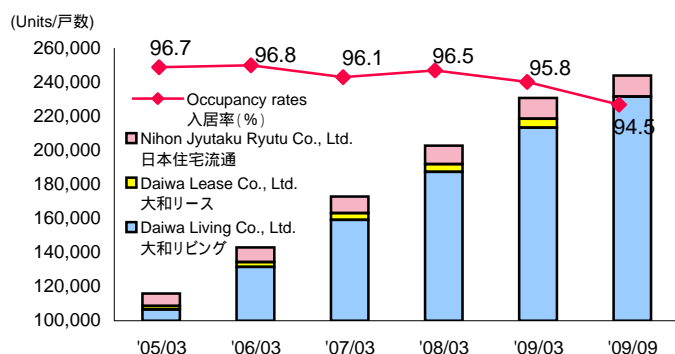
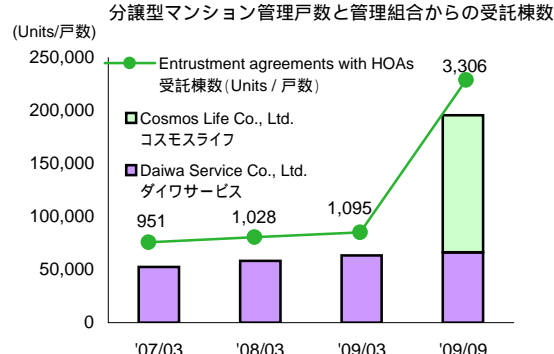
'09/04より大和リースの住宅事業は、大和リビングに移管されています。

Management of condominium units

分譲型マンション管理戸数

(Units / 戸数)

		'05/03	'06/03	'07/03	'08/03	'09/03	'09/09
Daiwa Service Co., Ltd. ダイワサービス	Management of condominium units 管理戸数	42,388	46,355	52,587	58,275	63,271	66,104
	Entrustment agreements with HOAs 管理組合からの受託棟数	788	865	951	1,028	1,095	1,133
Cosmos Life Co., Ltd. コスモスライフ '09/09より子会社化	Management of condominium units 管理戸数	-	-	-	-	-	129,470
	Entrustment agreements with HOAs 管理組合からの受託棟数	-	-	-	-	-	2,173
Total 2社計	Management of condominium units 管理戸数	42,388	46,355	52,587	58,275	63,271	195,574
	Entrustment agreements with HOAs 管理組合からの受託棟数	788	865	951	1,028	1,095	3,306

Management of rental housing units and Occupancy rates (Total)
賃貸住宅管理戸数と入居率 (3社計)Management of condominium units and
Entrustment agreements with HOAs
分譲型マンション管理戸数と管理組合からの受託棟数



Reference Materials

参考資料

Commercial Construction Business

商業建築事業

Sublease areas of commercial construction

転賃建物面積の推移

		'05/03	'06/03	'07/03	'08/03	'09/03	'09/09
Daiwa Lease Co., Ltd. 大和リース	Total leasing floor space(m ²) 貸付可能面積(m ²)	956,829	1,083,127	1,250,863	1,424,599	1,581,745	1,608,049
	Leasing floor space occupied(m ²) 入居賃貸面積(m ²)	943,581	1,068,375	1,225,480	1,389,283	1,538,349	1,560,699
	Tenants テナント数	1,349	1,598	1,882	2,092	2,322	2,405
	Occupancy rates(%)* 入居率(%)*	98.6	98.6	98.0	97.5	97.3	97.1
Daiwa Information Service Co., Ltd. 大和情報サービス	Total leasing floor space(m ²) 貸付可能面積(m ²)	624,207	724,342	891,904	1,004,589	1,129,528	1,203,096
	Leasing floor space occupied(m ²) 入居賃貸面積(m ²)	617,083	720,424	886,370	991,153	1,113,035	1,189,313
	Tenants テナント数	920	1,058	1,405	1,564	1,773	1,919
	Occupancy rates(%)* 入居率(%)*	98.9	99.5	99.4	98.7	98.5	98.9
Daiwa Royal Co., Ltd. ダイワロイヤル	Total leasing floor space(m ²) 貸付可能面積(m ²)	707,371	792,299	871,292	920,013	958,845	997,254
	Leasing floor space occupied(m ²) 入居賃貸面積(m ²)	704,845	790,273	867,054	914,545	944,568	982,694
	Tenants テナント数	1,221	1,351	1,488	1,583	1,665	1,736
	Occupancy rates(%)* 入居率(%)*	99.6	99.7	99.5	99.4	98.5	98.5
Total 3社計	Total leasing floor space(m ²) 貸付可能面積(m ²)	2,288,407	2,599,768	3,014,059	3,349,201	3,670,118	3,808,399
	Leasing floor space occupied(m ²) 入居賃貸面積(m ²)	2,265,509	2,579,072	2,978,904	3,294,981	3,595,952	3,732,706
	Tenants テナント数	3,490	4,007	4,775	5,239	5,760	6,060
	Occupancy rates(%)* 入居率(%)*	99.0	99.2	98.8	98.4	98.0	98.0

【 Reference / 参考 】

Management of Owned Commercial Facilities

自社保有商業施設の運営状況

		'05/03	'06/03	'07/03	'08/03	'09/03	'09/09
Daiwa House Industry Co., Ltd. 大和ハウス工業	Total leasing floor space(m ²) 貸付可能面積(m ²)	-	-	-	-	-	294,107
	Leasing floor space occupied(m ²) 入居賃貸面積(m ²)	-	-	-	-	-	279,769
	Tenants テナント数	-	-	-	-	-	618
	Occupancy rates(%)* 入居率(%)*	-	-	-	-	-	95.1

*Leasing floor space occupied/Total leasing floor space
*入居面積/賃貸可能面積


Reference Materials
参考資料
Resort Hotels and Sports Life Business
リゾート・スポーツ施設事業
DAIWA ROYAL HOTELS
ダイワロイヤルホテルズ

			'06/03	'07/03	'08/03	'09/03	'09/09
Number of guests 宿泊お客様数 (人)	1H	上期	1,669,329	1,761,123	1,636,366	1,596,953	1,490,678
	2H	下期	1,439,925	1,525,192	1,463,770	1,343,032	
Room occupancy rates (%) 客室稼働率 (%)	1H	上期	55.3	58.9	55.8	53.7	49.0
	2H	下期	57.8	53.2	53.4	46.9	
Number of Daiwa Royal club members メンバーズ期末会員数 (人)			9,921	9,288	8,968	8,634	8,466

(Note) 30 hotels. / (注) ホテル数は30ヶ所

Golf courses
ゴルフ場

			'06/03	'07/03	'08/03	'09/03	'09/09
Number of guests ゴルフ場ご利用お客様数 (人)	1H	上期	191,718	186,052	194,684	196,277	200,608
	2H	下期	145,741	161,573	159,077	162,595	
Number of members 期末会員数 (人)	1H	上期	5,461	5,237	5,054	4,643	4,069
	2H	下期	5,339	5,161	4,928	4,492	

(Note) 10 golf courses. / (注) ゴルフ場は10ヶ所

Sports club NAS
スポーツクラブNAS

			'06/03	'07/03	'08/03	'09/03	'09/09
Number of members 期末会員数 (人)			96,835	97,270	93,034	96,687	95,368

(Note) 51 sports clubs. / (注) スポーツクラブは51ヶ所

Other Businesses City-Center Hotels
その他事業 都市型ホテル部門

(Rooms / 客室数)

			'06/03	'07/03	'08/03	'09/03	'09/09
Room occupancy rates (%) 客室稼働率 (%)	1H	上期	78.1	75.6	78.3	74.8	71.7
	2H	下期	76.5	75.5	74.2	69.4	
Daiwa Roynet Hotels ダイワロイネットホテル (ダイワロイヤル)			(3)	(8)	(10)	(14)	(17)
Royton Sapporo ロイトン札幌 (大和ハウス工業)			599	1,675	2,085	2,916	3,635
OSAKA DAI-ICHI HOTEL 大阪第一ホテル (大阪マルビル)			(1)	(1)	(1)	(1)	(1)
Total 合計			292	292	292	292	292
			(1)	(1)	(1)	(1)	(1)
			448	448	447	447	447
			(5)	(10)	(12)	(16)	(19)
			1,339	2,415	2,824	3,655	4,374

(Note) Figures in parentheses indicate the number of hotels in each category. (注) ()内はホテル数

Home Center Business
ホームセンター事業

			'06/03	'07/03	'08/03	'09/03	'09/09
Number of customers (Thousands) 購入お客様数 (千人)	1H	上期	13,103	12,481	12,179	13,040	12,825
	2H	下期	12,101	11,732	11,576	11,626	
Sales account per customer (¥) お客様1人当たり購入単価 (円)	1H	上期	2,230	2,282	2,337	2,303	2,255
	2H	下期	2,372	2,387	2,451	2,365	
Sales floor space (except out-mall selling space) (㎡) 期末店舗面積 (外売場を除く) (㎡)			196,192	207,476	233,936	234,749	232,485
Number of stores (Stores) 期末店舗数 (店)			40	42	47	48	48

(Note) Excluding home renovation. / (注) リフォームを除く



Reference Materials
参考資料

Performance Indicators of Major Companies in the Daiwa House Group

大和ハウスグループ主要各社の経営指標

(¥ Million / 百万円)

		Net Sales	Operating income	Ordinary income	Net income	Total assets	Net assets	Interest-bearing liabilities
		売上高	営業利益	経常利益	四半期純利益	総資産	純資産	有利子負債
Daiwa House Industry Co., Ltd. (non-consolidated) 大和ハウス工業 (個別)	2008/09	560,639	24,472	28,397	15,978	1,393,164	561,225	250,961
	2009/09	532,431	29,105	31,307	19,216	1,308,716	552,918	248,725
Daiwa Lease Co., Ltd. 大和リース	2008/09	63,908	2,559	2,206	1,019	284,863	103,873	16,500
	2009/09	63,661	3,619	3,151	1,624	300,373	102,903	37,005
Daiwa Rakuda Industry Co., Ltd. ダイワラクダ工業	2008/09	20,498	503	565	308	38,511	24,408	14
	2009/09	18,981	286	338	156	34,623	20,378	-
Daiwa Logistics Co., Ltd. 大和物流	2008/09	17,357	735	776	453	26,724	15,463	5,575
	2009/09	15,507	740	786	440	27,630	15,889	6,002
Daiwa Service Co., Ltd. ダイワサービス	2008/09	12,241	466	531	312	10,977	5,327	-
	2009/09	11,394	439	553	459	10,953	5,834	-
Daiwa Living Co., Ltd. 大和リビング	2008/09	73,568	2,895	3,206	1,843	54,209	16,178	-
	2009/09	85,666	1,923	2,103	1,135	57,404	17,776	-
Daiwa Information Service Co., Ltd. 大和情報サービス	2008/09	15,525	1,167	1,189	589	65,708	6,714	3,924
	2009/09	17,445	1,447	1,444	847	70,716	7,440	3,334
Daiwa Royal Co., Ltd. ダイワロイヤル	2008/09	15,954	1,522	1,758	1,010	66,565	7,248	6,264
	2009/09	17,248	1,235	1,595	855	75,168	8,444	10,908
Nihon Jyutaku Ryutu Co., Ltd. 日本住宅流通	2008/09	8,933	49	61	1	12,811	3,319	2,500
	2009/09	10,407	201	179	100	14,422	3,424	3,470
Royal Home Center Co., Ltd. ロイヤルホームセンター	2008/09	33,267	843	1,047	313	43,393	33,836	2,519
	2009/09	31,574	865	922	439	45,541	34,263	3,585
Daiwa Resort Co., Ltd. 大和リゾート	2008/09	25,810	85	148	-108	72,944	18,866	14
	2009/09	22,968	123	188	3	65,835	13,926	50
Daiwa House Industry Co., Ltd. (consolidated) 大和ハウス工業 (連結)	2008/09	821,690	35,107	35,263	17,912	1,859,944	637,791	332,384
	2009/09	804,460	38,748	38,715	21,359	1,795,287	622,341	358,200
Parent company's share of the Group total (Times) 連単倍率 (倍)	2008/09	1.47	1.43	1.24	1.12	-	-	-
	2009/09	1.51	1.33	1.24	1.11	-	-	-

Daiwa House
GroupFinancial Statements
財務諸表

Non-Consolidated Balance Sheets

貸借対照表

(¥ Million / 百万円)

	'05/03	'06/03	'07/03	'08/03	'09/03	'10/03-1H
Assets						
資産の部						
Current assets						
流動資産						
Cash and deposits	79,945	65,364	52,186	42,358	58,195	38,676
現金預金						
Notes receivable, accounts receivable from completed construction contracts and other	46,622	39,240	34,224	33,579	23,819	35,230
受取手形・売掛金						
Marketable securities	-	-	-	20	-	206
有価証券						
Inventories	304,752	347,376	404,124	457,722	364,009	294,520
たな卸資産						
Costs on uncompleted construction contracts	33,939	47,602	56,652	70,035	54,663	29,837
未成工事支出金						
Land for sale	219,630	245,948	279,133	291,740	226,789	197,905
販売用土地						
Single-family houses for sale	78,929	92,238	98,132	120,449	100,488	83,038
戸建						
Condominiums for sale	87,543	103,430	130,532	127,870	96,352	83,263
マンション						
Other	53,157	50,280	50,468	43,420	29,949	31,604
その他						
Buildings for sale	41,330	43,923	57,323	84,005	72,090	61,309
販売用建物						
Single-family houses for sale	15,907	16,468	14,009	16,435	15,021	11,083
戸建						
Condominiums for sale	24,910	27,298	41,387	66,853	57,048	50,207
マンション						
Other	513	156	1,926	716	20	19
その他						
Other	38,528	37,972	43,001	66,194	57,787	52,403
その他の流動資産						
Allowance for doubtful accounts	-1,549	-2,072	-1,416	-815	-987	-898
貸倒引当金						
Total current assets	468,299	487,881	532,120	599,060	502,824	420,138
流動資産合計						
Noncurrent assets						
固定資産						
Property, plant and equipment	298,721	339,110	314,267	327,077	395,843	423,516
有形固定資産						
Buildings and structures	79,289	78,461	61,015	72,953	129,291	140,034
建物及び構築物						
Land	205,731	249,303	234,503	231,020	248,397	256,235
土地						
Other	13,700	11,345	18,748	23,102	18,154	27,246
その他						
Intangible assets	6,244	7,423	7,533	7,516	7,553	7,103
無形固定資産						
Investments and other assets	208,960	243,958	346,520	399,884	431,278	457,957
投資その他の資産						
Total noncurrent assets	513,926	590,492	668,321	734,477	834,676	888,577
固定資産合計						
Total assets	982,225	1,078,374	1,200,441	1,333,538	1,337,500	1,308,716
資産合計						


Financial Statements
財務諸表
Non-Consolidated Balance Sheets
貸借対照表

(¥ Million / 百万円)

	'05/03	'06/03	'07/03	'08/03	'09/03	'10/03-1H
Liabilities						
負債の部						
Current liabilities						
流動負債						
Notes payable, accounts payable for construction contracts and other 支払手形・工事未払金等	130,398	138,143	216,105	159,798	98,126	84,014
Commercial papers コマーシャル・ペーパー	-	-	-	20,000	-	-
Income taxes payable 未払法人税・事業税	8,033	9,274	9,334	16,362	540	11,698
Advances received on uncompleted construction contracts 未成工事受入金	47,925	65,087	59,651	55,615	59,534	35,921
Other その他の流動負債	112,704	145,234	164,060	199,263	184,994	171,871
Total current liabilities	299,063	357,740	449,152	451,040	343,195	303,506
Noncurrent liabilities						
固定負債						
Long-term loans payable 長期借入金	-	-	-	145,000	245,000	245,000
Other その他の固定負債	189,987	186,181	158,080	176,241	207,111	207,290
Total noncurrent liabilities	189,987	186,181	158,080	321,241	452,111	452,290
Total liabilities	489,050	543,921	607,232	772,282	795,306	755,797
負債合計						

Daiwa House
GroupFinancial Statements
財務諸表Non-Consolidated Balance Sheets
貸借対照表

(¥ Million / 百万円)

	'05/03	'06/03	'07/03	'08/03	'09/03	'10/03-1H
Shareholders' equity						
資本の部						
Capital stock	110,120	110,120	-	-	-	-
資本金						
Capital surplus	147,759	147,761	-	-	-	-
資本剰余金						
Retained earnings	293,964	315,157	-	-	-	-
利益剰余金						
Treasury stock	-481	-645	-	-	-	-
自己株式						
Revaluation reserve for land	-72,385	-67,709	-	-	-	-
土地再評価差額金						
Valuation difference on available-for-sale securities	14,197	29,769	-	-	-	-
その他有価証券評価差額金						
Total shareholders' equity	493,174	534,453	-	-	-	-
資本合計						
Total liabilities and shareholders' equity	982,225	1,078,374	-	-	-	-
負債・資本合計						
Net assets						
純資産の部						
Shareholders' equity						
株主資本						
Capital stock	-	-	110,120	110,120	110,120	110,120
資本金						
Capital surplus	-	-	228,795	228,786	228,786	228,786
資本剰余金						
Retained earnings	-	-	339,441	327,925	317,951	322,993
利益剰余金						
Treasury stock	-	-	-24,950	-36,791	-36,810	-36,838
自己株式						
Total shareholders' equity	-	-	653,407	630,040	620,046	625,061
株主資本合計						
Valuation and translation adjustments						
評価・換算差額等						
Valuation difference on available-for-sale securities	-	-	29,585	13,784	3,127	8,567
その他有価証券評価差額金						
Revaluation reserve for land	-	-	-89,784	-82,569	-80,980	-80,710
土地再評価差額金						
Total valuation and translation adjustments	-	-	-60,198	-68,785	-77,853	-72,142
評価・換算差額等合計						
Total net assets	-	-	593,208	561,255	542,193	552,918
純資産合計						
Total liabilities and net assets	-	-	1,200,441	1,333,538	1,337,500	1,308,716
負債純資産合計						


Financial Statements
財務諸表
Non-Consolidated Statements of Income
損益計算書

(¥ Million / 百万円)

	'05/03	'06/03	'07/03	'08/03	'09/03	Forecasts '10/03予想	'09/03-1H	'10/03-1H
Net sales 売上高	1,092,383	1,138,461	1,185,664	1,157,660	1,152,431	1,000,000	560,639	532,431
Cost of sales 売上原価	865,463	899,986	931,920	913,917	927,862	795,600	446,439	422,615
Selling, general and administrative expenses 販売費及び一般管理費	174,798	184,009	192,750	180,498	177,065	163,700	89,728	80,710
Operating income 営業利益	52,120	54,466	60,993	63,245	47,503	40,700	24,472	29,105
Interest income and dividends income 受取利息・配当金	1,959	2,146	2,446	6,531	9,548	-	4,828	3,968
Total non-operating income 営業外収益計	8,681	23,771	7,902	11,243	13,599	8,700	6,529	6,144
Interest expenses 支払利息	231	229	361	1,198	2,962	-	1,296	1,723
Total non-operating expenses 営業外費用計	3,732	5,571	3,259	24,529	32,782	11,400	2,604	3,942
Ordinary income 経常利益	57,070	72,666	65,636	49,959	28,320	38,000	28,397	31,307
Extraordinary income 特別利益	3,012	1,820	1,264	991	691	600	500	537
Extraordinary loss 特別損失	11,589	18,091	6,893	39,288	17,572	4,800	2,104	611
Income before income taxes and minority interests 税引前当期純利益	48,492	56,395	60,007	11,662	11,439	33,800	26,794	31,233
Income taxes 法人税等	14,056	21,044	21,714	4,215	5,861	13,600	10,816	12,017
Net income 当期純利益	34,436	35,351	38,292	7,446	5,578	20,200	15,978	19,216

Capital Investments (of which, investment property)
設備投資額(内、投資用不動産)

(¥ Million / 百万円)

	'05/03	'06/03	'07/03	'08/03	'09/03	Forecasts '10/03予想	'09/03-1H	'10/03-1H
Capital investments 設備投資額	27,398	61,062	38,599	59,715	99,280	70,000	55,432	37,965
Investment property 内、投資用不動産	16,984	45,687	23,355	48,958	79,723	58,000	48,419	32,479
Rental housing 賃貸住宅	-	-	467	-	23,564	28,900	13,358	16,475
Commercial facilities 商業施設	6,840	28,263	19,939	31,015	34,359	7,900	20,316	5,217
Business and corporate facilities 事業施設	10,144	17,424	2,949	17,225	21,283	15,400	14,228	9,992
Other その他	-	-	-	718	517	5,800	517	795



Analysis of Operations 業績

Sales by Segment 事業別売上高

		(¥ Million / 百万円)							
		'05/03	'06/03	'07/03	'08/03	'09/03	Forecasts '10/03予想	'09/03-1H	'10/03-1H
Housing 住宅	Single-family houses, contracting 戸建住宅	274,723	265,748	261,355	263,242	254,164	244,000	134,557	130,015
	Subdivisions 分譲住宅	45,563	44,059	45,681	40,025	41,737	31,000	21,944	16,166
	Land for subdivisions 土地	60,979	62,514	64,539	69,029	58,110	45,000	31,440	25,496
	Sub-total 小計	381,265	372,322	371,576	372,297	354,012	320,000	187,941	171,679
Home renovation 増改築	22,992	24,448	24,732	26,369	27,771	34,000	14,027	16,757	
Rental houses 集合住宅	229,282	243,444	258,966	284,299	285,722	262,000	142,110	134,679	
Condominiums マンション	124,466	144,077	155,226	143,105	109,425	87,000	52,618	49,013	
Commercial facilities 流通店舗	153,306	167,891	178,576	179,810	191,735	170,000	91,261	86,552	
Business and corporate facilities 建築	119,569	124,046	131,479	136,060	171,253	114,000	66,194	67,415	
Real estate agency services, etc. 仲介ほか	2,937	3,262	4,831	5,386	4,664	5,500	2,265	2,500	
Resort hotels and golf courses 観光	58,561	58,969	60,274	10,330	7,845	7,500	4,220	3,832	
Total 合計	1,092,383	1,138,461	1,185,664	1,157,660	1,152,431	1,000,000	560,639	532,431	

Gross Profit Ratio by Segment 事業別売上総利益率

		(%)							
		'05/03	'06/03	'07/03	'08/03	'09/03	Forecasts '10/03予想	'09/03-1H	'10/03-1H
Housing 住宅	Single-family houses, contracting 戸建住宅	23.3	22.7	22.7	22.6	22.9	22.7	23.1	23.4
	Subdivisions 分譲住宅	20.0	19.5	20.1	19.0	18.7	20.0	18.3	20.5
	Land for subdivisions 土地	8.8	8.0	5.8	9.0	-5.6	-8.3	2.9	-14.8
	Sub-total 小計	20.6	19.8	19.4	19.7	17.8	18.1	19.2	17.5
Home renovation 増改築	26.5	27.9	27.8	26.8	28.1	29.4	27.8	30.0	
Rental houses 集合住宅	23.9	23.8	24.1	23.8	22.1	24.6	21.8	25.5	
Condominiums マンション	16.7	17.3	17.6	14.6	2.3	-0.6	12.1	-1.1	
Commercial facilities 流通店舗	19.7	20.6	21.0	21.7	22.6	24.4	21.8	25.6	
Business and corporate facilities 建築	14.6	16.8	20.1	21.8	23.6	23.2	22.2	24.4	
Real estate agency services, etc. 仲介ほか	68.3	68.2	65.2	63.9	62.8	54.5	63.9	59.3	
Resort hotels and golf courses 観光	29.3	28.9	29.8	25.3	20.1	21.3	23.0	21.7	
Total 合計	20.8	20.9	21.4	21.1	19.5	20.4	20.4	20.6	



Analysis of Operations 業績

Orders Received by Segment / Sales by Segment

事業別受注高 / 売上高の状況

Orders received

受注高

(Units / 戸, ¥100 Million / 億円)

		'09/03		Forecasts '10/03 予想		'09/03-1H		'10/03-1H	
		Units/戸数	Amount/金額	Units/戸数	Amount/金額	Units/戸数	Amount/金額	Units/戸数	Amount/金額
Housing 住宅	Single-family houses, contracting 戸建住宅	8,159	2,368	8,560	2,405	4,305	1,265	4,282	1,215
	Subdivisions 分譲住宅	1,689	408	1,340	330	909	217	680	167
	Land for subdivisions 土地	-	591	-	415	-	324	-	220
	Sub-total 小計	9,848	3,367	9,900	3,150	5,214	1,807	4,962	1,603
Home renovation 増改築	-	273	-	380	-	138	-	182	
Rental houses 集合住宅	27,665	2,494	26,650	2,590	14,715	1,451	13,440	1,314	
Condominiums マンション	3,094	916	2,650	865	1,477	460	1,432	462	
Commercial facilities 流通店舗	-	1,913	-	1,600	-	968	-	809	
Business and corporate facilities 建築	-	1,428	-	1,080	-	620	-	579	
Real estate agency services, etc. 仲介ほか	-	46	-	60	-	21	-	28	
Resort hotels and golf courses 観光	-	78	-	75	-	42	-	38	
Total 合計	40,607	10,519	39,200	9,800	21,406	5,511	19,834	5,017	

Sales

売上高

(Units / 戸, ¥100 Million / 億円)

		'09/03		Forecasts '10/03 予想		'09/03-1H		'10/03-1H	
		Units/戸数	Amount/金額	Units/戸数	Amount/金額	Units/戸数	Amount/金額	Units/戸数	Amount/金額
Housing 住宅	Single-family houses, contracting 戸建住宅	8,586	2,541	8,590	2,440	4,545	1,345	4,420	1,300
	Subdivisions 分譲住宅	1,729	417	1,260	310	920	219	657	161
	Land for subdivisions 土地	-	581	-	450	-	314	-	254
	Sub-total 小計	10,315	3,540	9,850	3,200	5,465	1,879	5,077	1,716
Home renovation 増改築	-	277	-	340	-	140	-	167	
Rental houses 集合住宅	29,413	2,857	26,300	2,620	14,564	1,421	13,289	1,346	
Condominiums マンション	3,511	1,094	2,600	870	1,742	526	1,557	490	
Commercial facilities 流通店舗	-	1,917	-	1,700	-	912	-	865	
Business and corporate facilities 建築	-	1,712	-	1,140	-	661	-	674	
Real estate agency services, etc. 仲介ほか	-	46	-	55	-	22	-	25	
Resort hotels and golf courses 観光	-	78	-	75	-	42	-	38	
Total 合計	43,239	11,524	38,750	10,000	21,771	5,606	19,923	5,324	

Note: Amounts less than 100 million have been eliminated.

注) 億円未満は切り捨てて表示しております。



Reference Materials

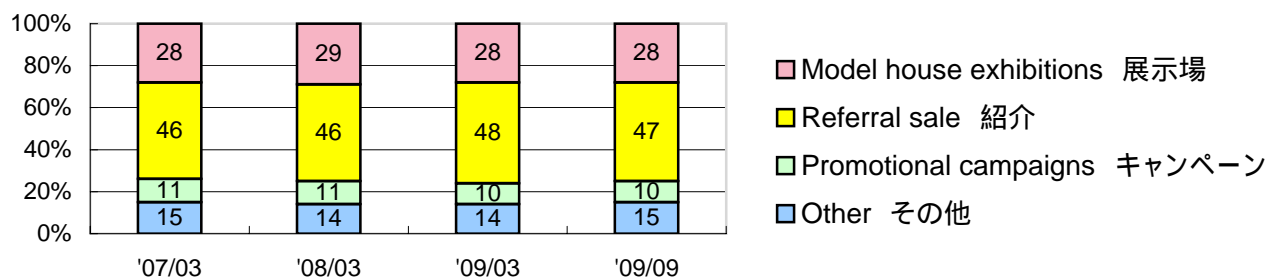
参考資料

Residential Business

住宅事業

Order receipt channels (Single-family houses and rental houses)

受注経路(住宅 + 集合)



Percentage of reconstruction

建替比率(建替 + 住替)

(%)

	'07/03	'08/03	'09/03	'09/09
Percentage of reconstruction	28	27	26	26
建替比率	28	27	26	26

Model house exhibitions

住宅展示場

	'08/03	'08/09	'09/03	'09/09
Number of model house exhibitions	260	267	248	233
住宅展示場数	260	267	248	233
Number of family groups visiting	102,218	53,152	96,616	47,624
住宅展示場来場者数(組)	102,218	53,152	96,616	47,624
Average number of family group visits per single model house exhibition	393	199	390	204
1展示場当たり住宅展示場来場者数(組)	393	199	390	204
Number of MACHINAKA-xevo				
Display homes	48	31	82	50
完成済	48	31	82	50
Works in process	14	48	6	2
仕掛中	14	48	6	2

Average sales per unit / Average area per unit

平均売上金額 / 平均売上面積

(¥ million / 百万円、㎡)

	'08/03		'08/09		'09/03		'09/09	
	Sales / 売上	Area / 面積	Sales / 売上	Area / 面積	Sales / 売上	Area / 面積	Sales / 売上	Area / 面積
Steel-frame	28.8	138.6	29.7	137.1	29.7	136.0	27.9	132.8
鉄骨	28.8	138.6	29.7	137.1	29.7	136.0	27.9	132.8
Wood-frame	32.0	136.9	28.7	140.8	28.8	134.6	27.5	132.7
木造	32.0	136.9	28.7	140.8	28.8	134.6	27.5	132.7
Single-family houses, contracting	28.9	138.5	29.6	137.4	29.6	135.9	27.9	132.8
戸建	28.9	138.5	29.6	137.4	29.6	135.9	27.9	132.8
Steel-frame	23.7	123.4	24.2	121.6	24.4	121.6	24.7	122.8
鉄骨	23.7	123.4	24.2	121.6	24.4	121.6	24.7	122.8
Wood-frame	23.9	120.8	21.5	122.1	22.3	122.3	24.1	123.0
木造	23.9	120.8	21.5	122.1	22.3	122.3	24.1	123.0
Subdivisions	23.8	123.2	23.9	121.7	24.1	121.7	24.6	122.8
分譲	23.8	123.2	23.9	121.7	24.1	121.7	24.6	122.8
Steel-frame (low-rise)	8.8	48.5	9.4	49.7	9.4	49.4	9.5	50.5
低層	8.8	48.5	9.4	49.7	9.4	49.4	9.5	50.5
Steel-frame (high and mid-rise)	17.7	71.7	12.4	93.1	11.6	82.3	11.5	63.8
中高層	17.7	71.7	12.4	93.1	11.6	82.3	11.5	63.8
Wood-frame	8.3	51.5	9.3	63.8	9.5	60.8	8.7	56.4
木造	8.3	51.5	9.3	63.8	9.5	60.8	8.7	56.4
Rental houses	9.7	50.8	9.7	54.3	9.7	53.2	9.7	51.7
集合	9.7	50.8	9.7	54.3	9.7	53.2	9.7	51.7



Reference Materials
参考資料

Condominiums Business

マンション事業

Sales

売上高の状況

(m², ¥ million / 百万円)

Region		Units	Floor space	Total amount	Average floor space per unit	Average sales per unit
地区		戸数	専有面積	金額	平均専有面積	平均売上金額
Hokkaido	'08/09	51	4,718	1,492	92.5	29.3
北海道	'09/09	144	12,837	3,672	89.1	25.5
Tohoku	'08/09	154	11,558	3,605	75.1	23.4
東北	'09/09	93	6,745	1,761	72.5	18.9
Kanto	'08/09	519	38,428	19,167	74.0	36.9
関東	'09/09	456	33,649	16,808	73.8	36.9
Chubu	'08/09	189	15,526	6,017	82.2	31.8
中部	'09/09	169	14,157	4,877	83.8	28.9
Kinki	'08/09	573	38,776	13,812	67.7	24.1
近畿	'09/09	441	34,074	13,641	77.3	30.9
Chugoku	'08/09	36	2,748	1,016	76.3	28.2
中国	'09/09	25	2,180	726	87.2	29.1
Kyushu	'08/09	220	17,972	7,409	81.7	33.7
九州	'09/09	229	19,241	7,451	84.0	32.5
Total	'08/09	1,742	129,726	52,618	74.5	30.2
合計	'09/09	1,557	122,883	49,013	78.9	31.5

Stock of completed construction

完成在庫の状況

(m², ¥ million / 百万円)

Region		Units (of which, contracts concluded)	Floor space	Total amount	Average floor space per unit
地区		戸数 (内、契約戸数)	専有面積	金額	平均専有面積
Hokkaido	'09/03	146 (9)	13,459	3,295	92.1
北海道	'09/09	119 (8)	10,837	2,762	91.1
Tohoku	'09/03	167 (13)	12,916	3,173	77.3
東北	'09/09	74 (14)	6,171	1,403	83.4
Kanto	'09/03	341 (58)	28,441	11,074	83.4
関東	'09/09	420 (60)	34,368	16,111	81.8
Chubu	'09/03	86 (9)	7,511	2,206	87.3
中部	'09/09	62 (12)	5,264	1,681	84.9
Kinki	'09/03	283 (110)	22,887	8,482	80.8
近畿	'09/09	262 (27)	20,691	8,013	79.0
Chugoku	'09/03	26 (6)	2,279	720	87.6
中国	'09/09	1 (0)	100	35	100.0
Kyushu	'09/03	143 (11)	12,136	4,109	84.8
九州	'09/09	136 (22)	11,643	3,988	85.6
Total	'09/03	1,192 (216)	99,633	33,059	83.5
合計	'09/09	1,074 (143)	89,074	33,994	82.9